

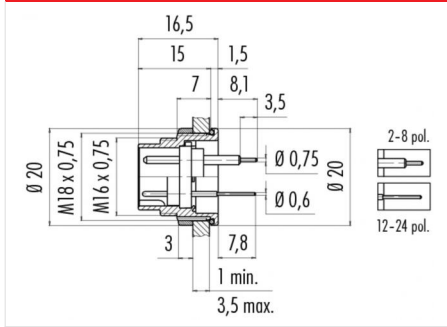
Product description **Contacts: 3 DIN, male panel mount connector, dip-solder, screwed from the front, silver plated contacts, UL approval**

Area **M16 IP67 Series 423/ 723/ 425**  
 Order number **09 0107 90 03**

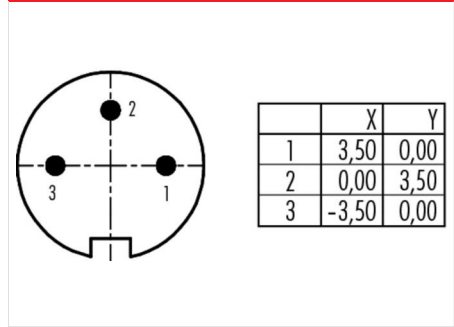
**Illustration**



**Scale drawing**



**Contact arrangement**



You can find the assembly instructions on the next page.

**Technical data**

**General values**

Connector design male panel mount connector  
 Connector locking system bolted  
 Termination dip-solder  
 Wire gauge (mm) -  
 Wire gauge (AWG) -  
 Upper limit temperature 95 °C  
 Lower limit temperature -40 °C

**Cable data**

Approval 1 UL

**Electrical values**

Rated voltage 250 V  
 Rated impulse voltage 1500 V  
 Pollution degree 1  
 Overvoltage category I  
 Insulating material group III  
 Rated current (40 °C) 7 A  
 Volume resistivity ≤ 5 mΩ  
 EMC compliance Shielding is not possible  
 Degree of protection IP67  
 Mechanical operation > 500 Mating cycles

**Material**

Contact material CuZn (brass)  
 Contact plating Ag (silver)  
 Contact body material PBT (UL 94 V-0)

Product description

Contacts: 3 DIN, male panel mount connector, dip-solder, screwed from the front, silver plated contacts, UL approval

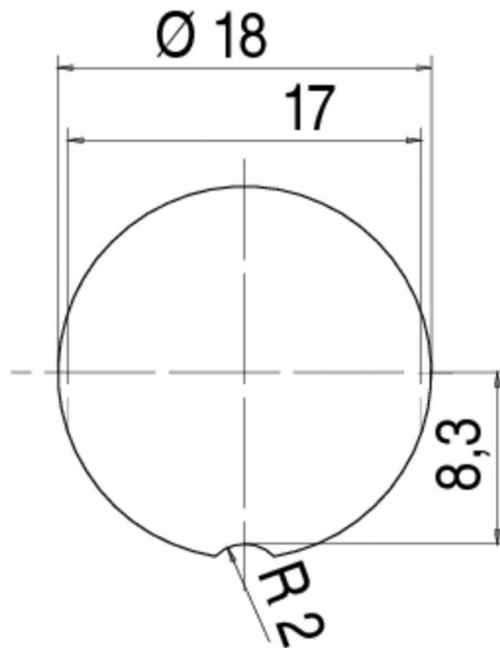
Area

M16 IP67 Series 423/ 723/ 425

Order number

09 0107 90 03

Assembly instructions / Panel cut-out



Product description	<b>Contacts: 3 DIN, male panel mount connector, dip-solder, screwed from the front, silver plated contacts, UL approval</b>
Area	<b>M16 IP67 Series 423/ 723/ 425</b>
Order number	<b>09 0107 90 03</b>

## Sicherheitshinweise

The connector must not be connected or separated under load. Non-observance and incorrect use can result in personal injury.

The connectors are designed for use in plant, control system and electrical equipment. The end user is responsible for checking whether the connectors are suitable for use in other applications.

Connectors with degree of protection IP 67 and IP 68 are not suitable for use under water. When used outdoors, the connectors must be separately protected against corrosion. For further information about IP degrees of protection refer to 'Technical support' in the Download Centre.

The connector is not suitable for mains voltages. Please observe the pollution degrees and the overvoltage category. For further information refer to 'Technical support' in the Download Centre.