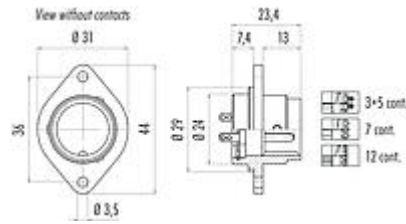


Product description	Bayonet Male panel mount connector, Contacts: 5, unshielded, solder, IP40
Area	Bayonet series 690
Part no.	09 0061 00 05

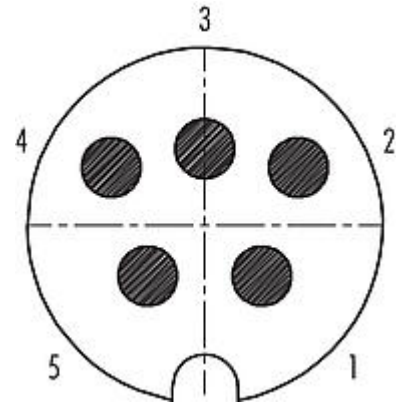
### Illustration



### Scale drawing



### Contact arrangement (Plug-in side)



You can find the component part drawing and assembly instructions on the next page.

## Technical data

### General features

Part no.	09 0061 00 05
Connector design	Male panel mount connector
Version	male straight
Connector locking system	Bayonet
Termination	solder
Degree of protection	IP40
Cross-sectional area	2.50 mm <sup>2</sup> / AWG 14
Temperature range from/to	-40 °C / 85 °C
Mechanical operation	> 50 Mating cycles
Weight (g)	15.47
Customs tariff number	85369010

### Electrical parameters

Rated voltage	250 V
Rated impulse voltage	2500 V
Rated current (40 °C)	10,0 A
Insulation resistance	$\geq 10^{10} \Omega$
Pollution degree	1
Overvoltage category	II
Insulating material group	III
EMC compliance	unshielded

# Product data sheet

## Power connectors



Product description **Bayonet Male panel mount connector, Contacts: 5, unshielded, solder, IP40**

Area **Bayonet series 690**  
Part no. **09 0061 00 05**

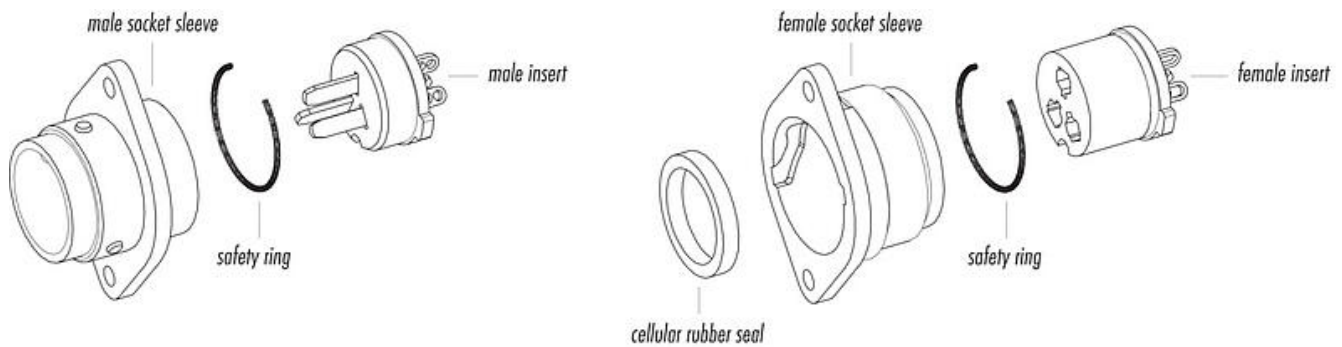
### Material

Housing material	PBT
Contact body material	PBT (UL94 V-0)
Contact material	CuZn (brass)
Contact plating	Ag (silver)
REACH SVHC	None (No pollutants)
SCIP number	SCIP-number not available

### Classifications

eCl@ss 11.1	27-44-01-09
ETIM 7.0	EC003569

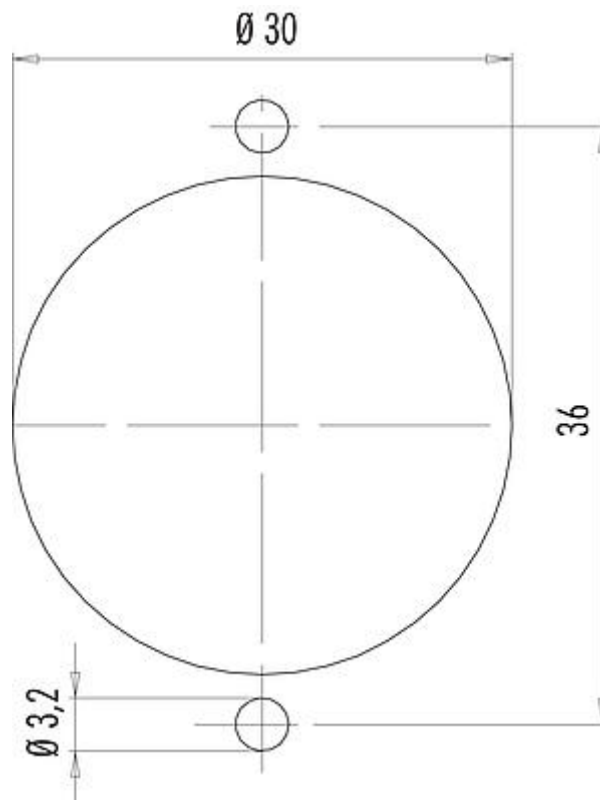
### Component part drawing



Product description Bayonet Male panel mount connector, Contacts: 5, unshielded, solder, IP40

Area Bayonet series 690  
Part no. 09 0061 00 05

### Assembly instructions / Panel cut-out



Product description	<b>Bayonet Male panel mount connector, Contacts: 5, unshielded, solder, IP40</b>
Area	<b>Bayonet series 690</b>
Part no.	<b>09 0061 00 05</b>

### **Security notices**

The connector must not be plugged or unplugged under load. Non-observance and improper use can result in personal injury.

The connectors have been developed for applications in plant engineering, control and electrical equipment construction. The user is responsible for checking whether the connectors can also be used in other areas of application.