

Product description	7/8" male panel mount connector, Contacts: 4, unshielded, single wires, IP68, UL, VDE, PG13.5
Area	7/8" series 820
Order number	09 2449 300 04

Illustration	Scale drawing	Contact arrangement (Plug-in side)

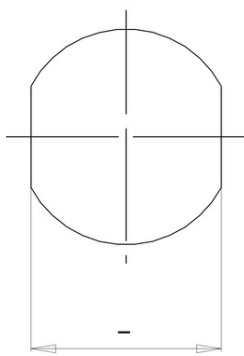
You can find the assembly instructions on the next page.

Technical data			
General features			
Order number	09 2449 300 04	Material	Housing material
Connector design	male panel mount connector	Contact body material	CuZn (Brass nickel plated)
Version	connector male straight	Contact material	PUR
Connector locking system	screw	Contact plating	CuZn (brass)
Termination	single wires	REACH SVHC	Au (gold)
Degree of protection	IP68	Classifications	CAS 7439-92-1 (Lead)
Cross-sectional area	0.75 mm ² / AWG 18	eCl@ss 11.1	27-44-01-09
Temperature range from/to	-25 °C / 85 °C	ETIM 7.0	EC003569
Mechanical operation	> 100 Mating cycles		
Weight (g)	44.034		
Customs tariff number	85369010		
Electrical parameters			
Rated voltage	300 (UL 600 V) V		
Rated impulse voltage	4000 V		
Rated current (40 °C)	7 A		
Pollution degree	3		
Overvoltage category	III		
Insulating material group	I		
EMC compliance	unshielded		

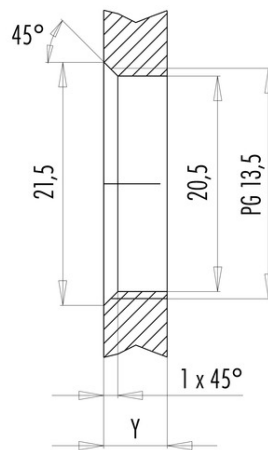
Product description 7/8" male panel mount connector, Contacts: 4, unshielded, single wires, IP68, UL, VDE, PG13.5
 Area 7/8" series 820
 Order number 09 2449 300 04

Assembly instructions / Panel cut-out

With flats as anti-rotation device



With bore hole



Installation direction: o-ring sits on chamfer.

Tightening moment

Metall housing/Plastic housing 1,25 Nm

Thickness of wall Y (mm)		
Version	min (mm)	max (mm)
Fastened from rear	2	3,5
Front fastened	2	4,5
positioning possible ¹⁾	2	3,5
Screw clamp	2	3,5
Thread M12 x 1	2	3,0
Thread M14 x 1 ²⁾	³⁾ 1,5/ ⁴⁾ 2	6,5

Notes

- ¹⁾ Do not attach a chamfer
- ²⁾ Wall thickness:
use locknut 01-5385 up to 1,5 mm,
>1,5 mm cut thread
- ³⁾ Nut
- ⁴⁾ Thread in wall of housing

Product description	7/8" male panel mount connector, Contacts: 4, unshielded, single wires, IP68, UL, VDE, PG13.5
Area	7/8" series 820
Order number	09 2449 300 04

Security notices

The connector must not be plugged or unplugged under load. Non-observance and improper use can result in personal injury.

The connectors have been developed for applications in plant engineering, control and electrical equipment construction. The user is responsible for checking whether the connectors can also be used in other areas of application.

Plug connectors with enclosure protection IP 67 and IP 68 are not suitable for use under water. When used outdoors, the plug connectors must be protected separately against corrosion. For further information on the IP protection classes, please refer to the "Technical Information" download centre.