

# Product data sheet

## Power connectors

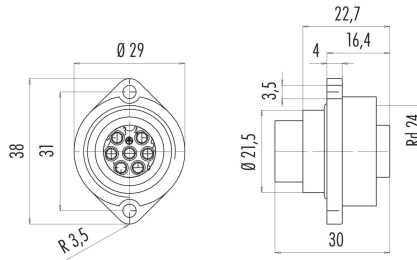


Product description	RD24 female panel mount connector, Contacts: 6+PE, unshielded, crimping (Crimp contacts must be ordered separately), IP67, UL, ESTI+, VDE
Area	RD24 series 693
Part no.	09 4204 00 07

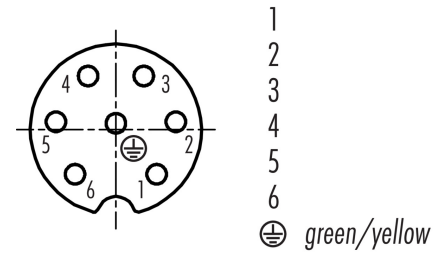
### Illustration



### Scale drawing



### Contact arrangement (Plug-in side)



You can find the assembly instructions on the next page.

## Technical data

### General features

Part no.	09 4204 00 07
Connector design	female panel mount connector
Version	connector female straight
Connector locking system	screw
Termination	crimping ( <a href="#">Crimp contacts must be ordered separately</a> )
Degree of protection	IP67
Cross-sectional area	<a href="#">see crimp contacts under accessories</a>
Temperature range from/to	-40 °C / 100 °C
Mechanical operation	> 500 Mating cycles
Weight (g)	12.31
Customs tariff number	85369010

### Electrical parameters

Rated voltage	250 V
Rated impulse voltage	4000 V
Rated current (40 °C)	10 A (8 A UL)
Insulation resistance	$\geq 10^{10} \Omega$
Pollution degree	3
Overvoltage category	III
Insulating material group	III
EMC compliance	unshielded

### Material

Housing material	PA
------------------	----



# Product data sheet

## Power connectors



Product description **RD24 female panel mount connector, Contacts: 6+PE, unshielded, crimping (Crimp contacts must be ordered separately), IP67, UL, ESTI+, VDE**

Area **RD24 series 693**  
Part no. **09 4204 00 07**

Contact body material	PBT
Contact material	depending on crimp contact (accessory)
Contact plating	Ag (silver)
REACH SVHC	None (No pollutants)
SCIP number	SCIP-number not available

### Authorization/approvals

Approvals	UL, ESTI+, VDE
-----------	----------------

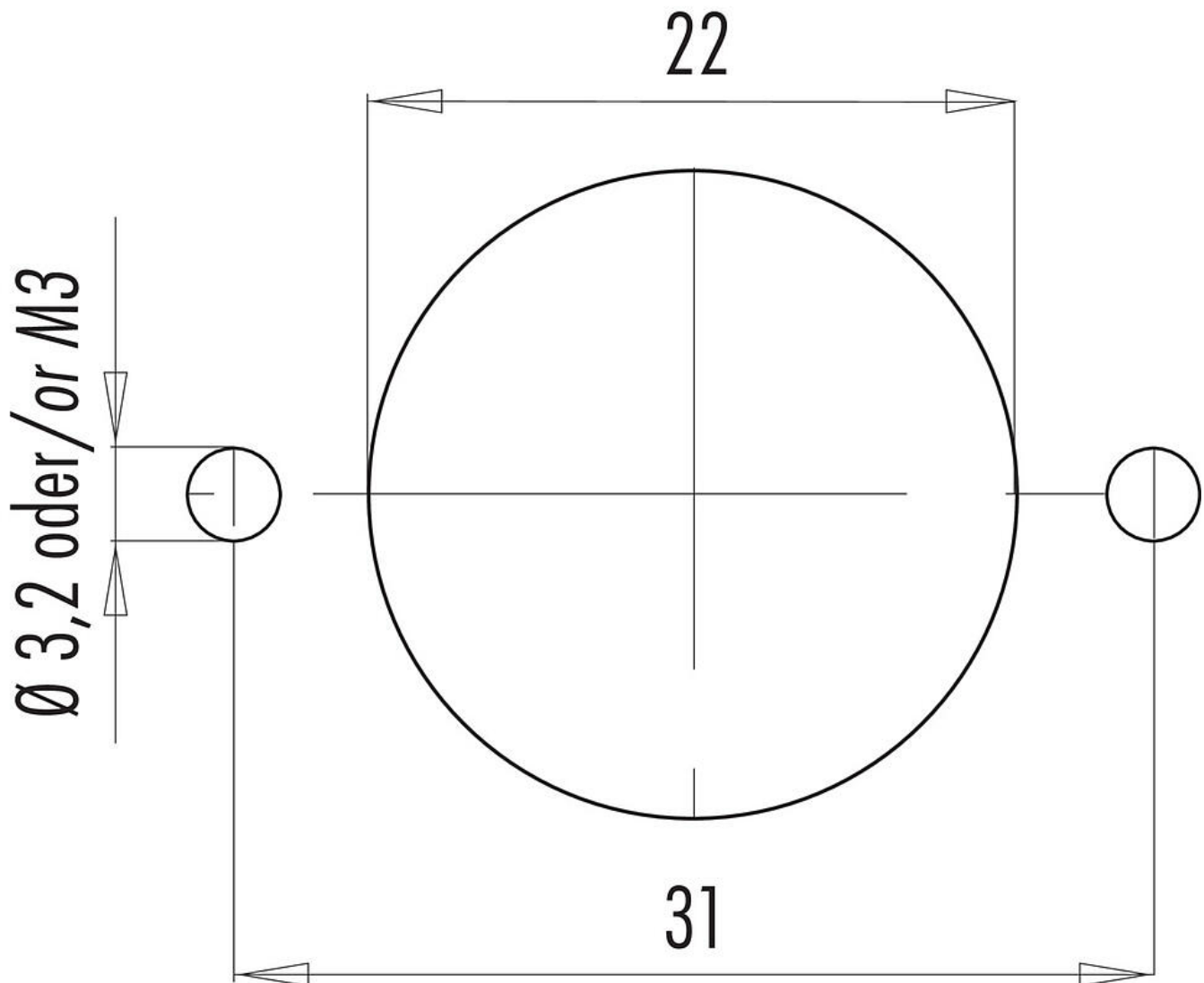
### Classifications

eCl@ss 11.1	27-44-01-09
ETIM 7.0	EC003569

Product description RD24 female panel mount connector, Contacts: 6+PE, unshielded, crimping (Crimp contacts must be ordered separately), IP67, UL, ESTI+, VDE

Area RD24 series 693  
Part no. 09 4204 00 07

### Assembly instructions / Panel cut-out



Product description	<b>RD24 female panel mount connector, Contacts: 6+PE, unshielded, crimping (Crimp contacts must be ordered separately), IP67, UL, ESTI+, VDE</b>
Area	<b>RD24 series 693</b>
Part no.	<b>09 4204 00 07</b>

## Security notices

The connector must not be plugged or unplugged under load. Non-observance and improper use can result in personal injury.

The connectors have been developed for applications in plant engineering, control and electrical equipment construction. The user is responsible for checking whether the connectors can also be used in other areas of application.

Plug connectors with enclosure protection IP 67 and IP 68 are not suitable for use under water. When used outdoors, the plug connectors must be protected separately against corrosion. For further information on the IP protection classes, please refer to the "Technical Information" download centre.