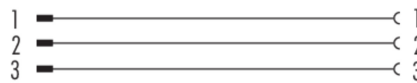


Product description	M8 lead-through for control cabinet, Contacts: 3, shielded, pluggable, IP67, M8x1.0
Area	M8 series 765
Part no.	09 5250 00 03

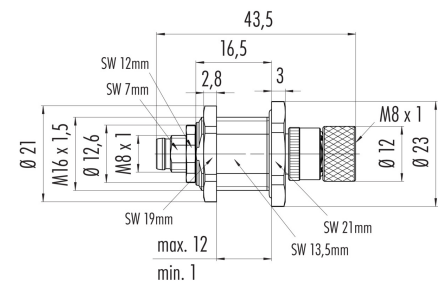
Illustration



Pin assignment plans

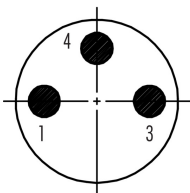


Scale drawing

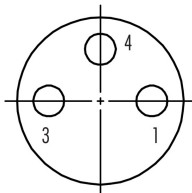


Contact arrangement (Plug-in side)

Stifteinsatz M8
Male insert M8



Buchseinsatz M8
Female insert M8



You can find the assembly instructions on the next page.

Technical data

General features

Part no.	09 5250 00 03
Connector design	lead-through for control cabinet
Version	adapter
Connector locking system	screw
Termination	pluggable
Degree of protection	IP67
Temperature range from/to	-25 °C / 85 °C
Mechanical operation	> 100 Mating cycles
Weight (g)	35.00
Customs tariff number	85369010

Product description	M8 lead-through for control cabinet, Contacts: 3, shielded, pluggable, IP67, M8x1.0
Area	M8 series 765
Part no.	09 5250 00 03

Electrical parameters

Rated voltage	30 V
Rated impulse voltage	2500 V
Rated current (40 °C)	4 A
Pollution degree	3
Overvoltage category	II
Insulating material group	II
EMC compliance	shielded
Shield connection	Shielding on the housing

Material

Contact body material	PA
Contact material	Pin: CuZn (brass) / Socket: CuSn (bronze)
Contact plating	Au (gold)
Locking material	Zinc die-cast nickel-plated
REACH SVHC	CAS 7439-92-1 (Lead)
SCIP number	9fd869c0-bf5a-4713-afa3-1912b10c94fd

Classifications

eCl@ss 11.1	27-44-01-09
ETIM 7.0	EC003569

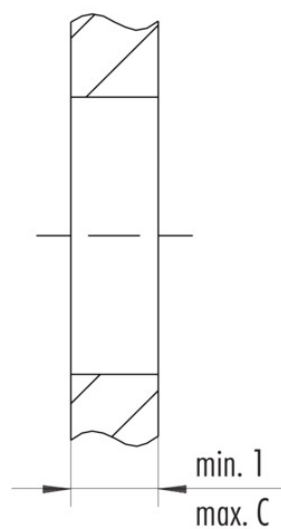
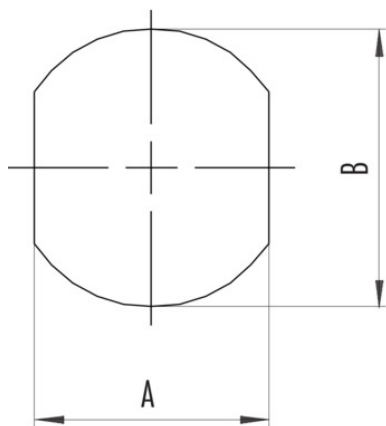
Declarations of conformity

RoHS Directive	2011/65/EU (EN 50581:2012)
----------------	----------------------------

Product description **M8 lead-through for control cabinet, Contacts: 3, shielded, pluggable, IP67, M8x1.0**
Area **M8 series 765**
Part no. **09 5250 00 03**

Assembly instructions / Panel cut-out

Schaltschrankdurchführung mit Durchgangsbohrung



	A	B	C
M8	13,5	16,1	12
M12	18,2	20,1	9

Product description	M8 lead-through for control cabinet, Contacts: 3, shielded, pluggable, IP67, M8x1.0
Area	M8 series 765
Part no.	09 5250 00 03

Security notices

The connector must not be plugged or unplugged under load. Non-observance and improper use can result in personal injury.

The connectors have been developed for applications in plant engineering, control and electrical equipment construction. The user is responsible for checking whether the connectors can also be used in other areas of application.

Plug connectors with enclosure protection IP 67 and IP 68 are not suitable for use under water. When used outdoors, the plug connectors must be protected separately against corrosion. For further information on the IP protection classes, please refer to the "Technical Information" download centre.

To lock the cable connector with the device connector, the threaded ring is tightened "hand-tight" (approx. 50 cNm).