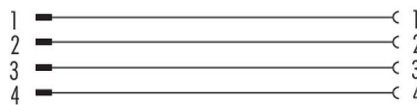


Product description **Connecting Cables Lead-through for control cabinet, Contacts: 4, shielded, pluggable, IP67, M8x1.0**  
Area **Connecting Cables series 765**  
Part no. **09 5251 00 04**

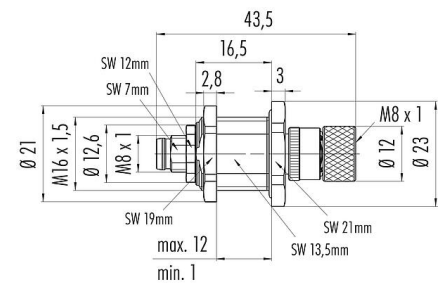
**Illustration**



**Pin assignment plans**



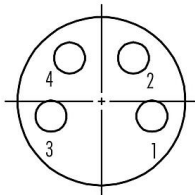
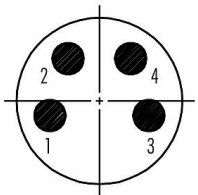
**Scale drawing**



**Contact arrangement (Plug-in side)**

Stifteinsatz M8  
Male insert M8

Buchseinsatz M8  
Female insert M8



You can find the assembly instructions on the next page.

**Technical data**

General features

Part no.	<b>09 5251 00 04</b>
Connector design	Lead-through for control cabinet
Version	adapter
Connector locking system	screw
Termination	pluggable
Degree of protection	IP67
Temperature range from/to	-25 °C / 85 °C
Mechanical operation	> 100 Mating cycles
Weight (g)	35.31
Customs tariff number	85369010

# Product data sheet

## Automation technology - sensors and actuators



Product description	<b>Connecting Cables Lead-through for control cabinet, Contacts: 4, shielded, pluggable, IP67, M8x1.0</b>
Area	<b>Connecting Cables series 765</b>
Part no.	<b>09 5251 00 04</b>

### Electrical parameters

Rated voltage	60 V
Rated impulse voltage	1500 V
Rated current (40 °C)	4.0 A
Pollution degree	3
Overvoltage category	II
Insulating material group	II
EMC compliance	shielded
Shield connection	Shield on the housing

### Material

Contact body material	PA
Contact material	CuZn (brass) / CuSn (bronze)
Contact plating	Au (gold)
Locking material	Zinc die-cast nickel-plated
REACH SVHC	CAS 7439-92-1 (Lead)
SCIP number	SCIP-number not available

### Classifications

eCl@ss 11.1	27-44-01-09
ETIM 7.0	EC003569

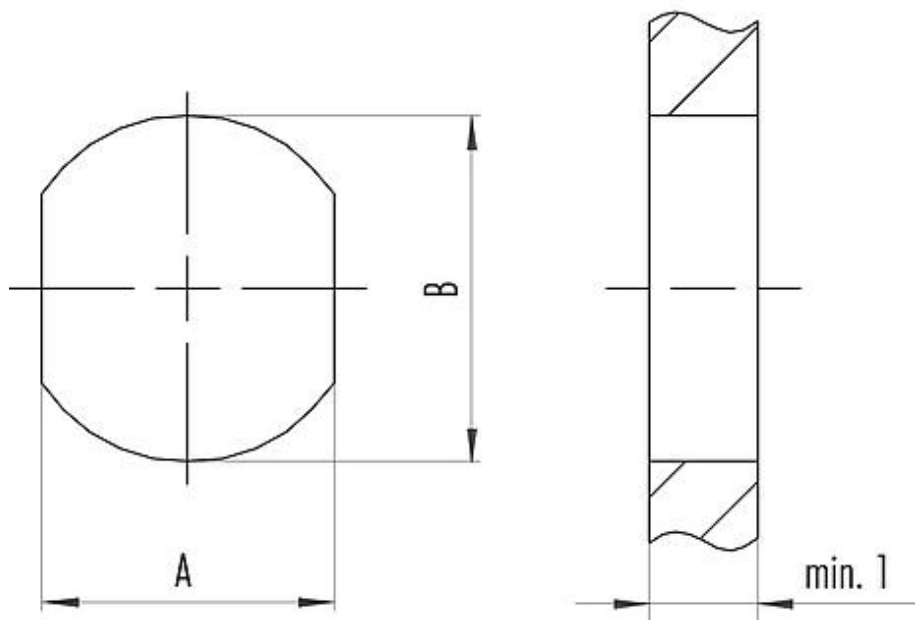
### Declarations of conformity

RoHS Directive	2011/65/EU (EN 50581:2012)
----------------	----------------------------

Product description **Connecting Cables Lead-through for control cabinet, Contacts: 4, shielded, pluggable, IP67, M8x1.0**  
Area **Connecting Cables series 765**  
Part no. **09 5251 00 04**

**Assembly instructions / Panel cut-out**

*Lead-through for control cabinet with bore hole*



	A	B
M8	13,5	16,1
M12	13,5	16,1

*Tightening torque*  
3 Nm

Product description	<b>Connecting Cables Lead-through for control cabinet, Contacts: 4, shielded, pluggable, IP67, M8x1.0</b>
Area	<b>Connecting Cables series 765</b>
Part no.	<b>09 5251 00 04</b>

## Security notices

The connector must not be plugged or unplugged under load. Non-observance and improper use can result in personal injury.

The connectors have been developed for applications in plant engineering, control and electrical equipment construction. The user is responsible for checking whether the connectors can also be used in other areas of application.

Plug connectors with enclosure protection IP67 and IP68 are not suitable for use under water. When used outdoors, the plug connectors must be protected separately against corrosion. For further information on the IP protection classes, please refer to the "Technical Information" download centre.

To lock the cable connector with the device connector, the threaded ring is tightened "hand-tight" (approx. 50 cNm).