

| | |
|---------------------|--|
| Product description | M12-A female panel mount connector, Contacts: 8, 6.0 mm, shielded, cable, IP68, PG9, 8 x 0.25 mm ² , front mounting |
| Area | M12-A series 763 |
| Order number | 70 3482 287 08 |

| Illustration | Scale drawing | Contact arrangement (Plug-in side) |
|--------------|---------------|---|
| | | <ul style="list-style-type: none"> 1 white 2 brown 3 green 4 yellow 5 grey 6 pink 7 blue 8 red <p>Shielded versions: shield = housing</p> |

You can find the assembly instructions on the next page.

Technical data

General features

| | |
|---------------------------|------------------------------|
| Order number | 70 3482 287 08 |
| Connector design | female panel mount connector |
| Cable length | 0,5 m |
| Version | connector female straight |
| Connector locking system | screw |
| Termination | cable |
| Degree of protection | IP68 |
| Cable outlet | 6.0 mm |
| Temperature range from/to | -25 °C / 70 °C |
| Mechanical operation | > 100 Mating cycles |
| Weight (g) | 47 |
| Customs tariff number | 85444290 |

Electrical parameters

| | |
|---------------------------|--------------------------|
| Rated voltage | 30 V |
| Rated impulse voltage | 800 V |
| Rated current (40 °C) | 1.5 A |
| Insulation resistance | > 10 ⁸ Ω |
| Pollution degree | 3 |
| Overvoltage category | II |
| Insulating material group | III |
| EMC compliance | shielded |
| Shield connection | Shielding on the housing |

Material

| | |
|-----------------------|-----------------------------|
| Housing material | Zinc die-cast nickel-plated |
| Contact body material | PA |
| Contact material | CuSn (bronze) |
| Contact plating | Au (gold) |
| REACH SVHC | CAS 7439-92-1 (Lead) |

Classifications

| | |
|-------------|-------------|
| eCl@ss 11.1 | 27-06-03-11 |
| ETIM 7.0 | EC003570 |

Cable data

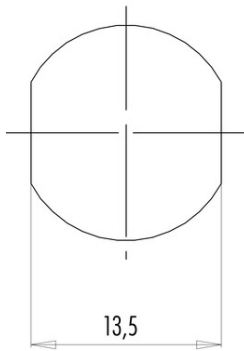
| | |
|-----------------|--------------------------|
| Cable diameter | 6.0 mm |
| Cross section | 8 x 0.25 mm ² |
| Sheath material | PUR |
| Halogen free | Yes |

Product description **M12-A female panel mount connector, Contacts: 8, 6.0 mm, shielded, cable, IP68, PG9, 8 x 0.25 mm², front mounting**

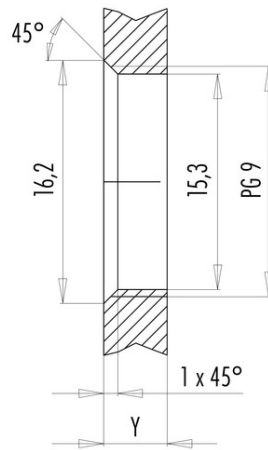
Area **M12-A series 763**
 Order number **70 3482 287 08**

Assembly instructions / Panel cut-out

With flats as anti-rotation device



With bore hole



Installation direction: o-ring sits on chamfer.

Tightening moment

Metall housing/Plastic housing 1,25 Nm

| Thickness of wall Y (mm) | | |
|------------------------------------|------------------------------------|----------|
| Version | min (mm) | max (mm) |
| Fastened from rear | 2 | 3,5 |
| Front fastened | 2 | 4,5 |
| positioning possible ¹⁾ | 2 | 3,5 |
| Screw clamp | 2 | 3,5 |
| Thread M12 x 1 | 2 | 3,0 |
| Thread M14 x 1 ²⁾ | ³⁾ 1,5/ ⁴⁾ 2 | 6,5 |

Notes

- ¹⁾ Do not attach a chamfer
- ²⁾ Wall thickness:
use locknut 01-5385 up to 1,5 mm,
>1,5 mm cut thread
- ³⁾ Nut
- ⁴⁾ Thread in wall of housing

| | |
|---------------------|---|
| Product description | M12-A female panel mount connector, Contacts: 8, 6.0 mm, shielded, cable, IP68, PG9, 8 x 0.25 mm², front mounting |
| Area | M12-A series 763 |
| Order number | 70 3482 287 08 |

Security notices

The connectors have been developed for applications in plant engineering, control and electrical equipment construction. The user is responsible for checking whether the connectors can also be used in other areas of application.

Plug connectors with enclosure protection IP 67 and IP 68 are not suitable for use under water. When used outdoors, the plug connectors must be protected separately against corrosion. For further information on the IP protection classes, please refer to the "Technical Information" download centre.