

Product description	M12-A female panel mount connector, Contacts: 8, 6.0 mm, shielded, cable, IP68, M16x1.5, 8 x 0.25 mm ²
Area	M12-A series 763
Order number	70 3482 785 08

Illustration	Scale drawing	Contact arrangement (Plug-in side)
		<ul style="list-style-type: none"> 1 white 2 brown 3 green 4 yellow 5 grey 6 pink 7 blue 8 red <p><i>Shielded versions: shield = housing</i></p>

You can find the assembly instructions on the next page.

Technical data

General features

Order number	70 3482 785 08
Connector design	female panel mount connector
Cable length	0,5 m
Version	connector female straight
Connector locking system	screw
Termination	cable
Degree of protection	IP68
Cable outlet	6.0 mm
Temperature range from/to	-25 °C / 70 °C
Mechanical operation	> 100 Mating cycles
Weight (g)	46.83
Customs tariff number	85444290

Electrical parameters

Rated voltage	30 V
Rated impulse voltage	800 V
Rated current (40 °C)	1.5 A
Insulation resistance	> 10 ⁸ Ω
Pollution degree	3
Overvoltage category	II
Insulating material group	III
EMC compliance	shielded
Shield connection	Shielding on the housing

Material

Housing material	Zinc die-cast nickel-plated
Contact body material	PA
Contact material	CuSn (bronze)
Contact plating	Au (gold)
REACH SVHC	CAS 7439-92-1 (Lead)

Cable data

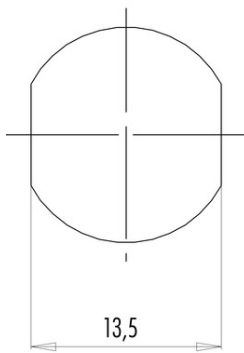
Cable diameter	6.0 mm
Cross section	8 x 0.25 mm ²
Sheath material	PUR
Single-lead insulation	PP
Halogen free	Yes

Product description **M12-A female panel mount connector, Contacts: 8, 6.0 mm, shielded, cable, IP68, M16x1.5, 8 x 0.25 mm²**

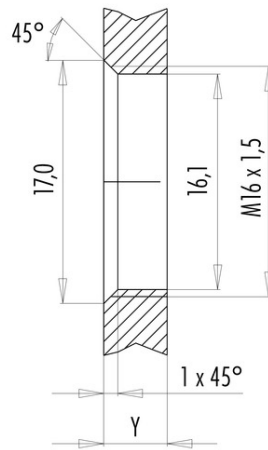
Area **M12-A series 763**
 Order number **70 3482 785 08**

Assembly instructions / Panel cut-out

With flats as anti-rotation device



With bore hole



Installation direction: o-ring sits on chamfer.

Tightening moment

Metall housing/Plastic housing 1,25 Nm

Thickness of wall Y (mm)		
Version	min (mm)	max (mm)
Fastened from rear	2	3,5
Front fastened	2	4,5
positioning possible ¹⁾	2	3,5
Screw clamp	2	3,5
Thread M12 x 1	2	3,0
Thread M14 x 1 ²⁾	³⁾ 1,5/ ⁴⁾ 2	6,5

Notes

- ¹⁾ Do not attach a chamfer
- ²⁾ Wall thickness:
use locknut 01-5385 up to 1,5 mm,
>1,5 mm cut thread
- ³⁾ Nut
- ⁴⁾ Thread in wall of housing

Product description	M12-A female panel mount connector, Contacts: 8, 6.0 mm, shielded, cable, IP68, M16x1.5, 8 x 0.25 mm ²
Area	M12-A series 763
Order number	70 3482 785 08

Security notices

The connectors have been developed for applications in plant engineering, control and electrical equipment construction. The user is responsible for checking whether the connectors can also be used in other areas of application.

Plug connectors with enclosure protection IP 67 and IP 68 are not suitable for use under water. When used outdoors, the plug connectors must be protected separately against corrosion. For further information on the IP protection classes, please refer to the "Technical Information" download centre.